

# CASE STUDY

---

Children's Nursery School

Digital temperature screening protection

# CASE STUDY: Nursery School

"Our top priority is to ensure the health and safety of all children, staff, and visitors is always adhered to. By implementing the FeverCheckerPro we are now able to accurately record and track everyone's temperature and any changes throughout the day. It is an investment I felt was essential in aiding the protection of everyone and my business from the concern of COVID-19 contagion."  
Nursery, Hereford

The day nursery are very proud of their capabilities and achievements from their unique and spacious setting in central Hereford from where they pride themselves on providing outstanding care and countless opportunities for children. Their ethos is built on curiosity and learning, allowing children the flexibility to design their play space as their journey progresses.



Department  
for Education

*"The bulk of the increase in absences has come from the more than 330,000 children who are self-isolating because of contact with a Covid case, with 279,000 staying off because of contact within school, compared with 172,000 the week before."*  
- Department of Education

The now familiar lockdowns and isolations have been a constant challenge for many organisations including colleges, schools, and children's nurseries. It has been reported that the closure of nurseries and schools has caused a regression of progress and affected key development opportunities. Avoiding this is at the top of the nursery's priority list as it would impact the children's progression which may have a detrimental effect on their futures. To combat this, their dedicated staff have risen to the challenge of every nuance of Government advice with procedures in place to protect the children, staff, and parents and prioritised their health and safety to ensure they provide the best care in their local community.

To enhance their health and safety management, this forward-thinking nursery uses a FeverCheckerPro digital temperature scanning system to complement its other safety initiatives.

## Executive Summary

This children's nursery in Hereford installed a FeverCheckerPro digital health screening system to complement its COVID-19 management during the ongoing pandemic. This elevated response helps to protect the local community by scanning staff, children, and guests for high temperatures which can be indicative of fever-related illnesses.



**Fever  
Checker**  
PRO

This specialist device is situated in the reception area at the entrance to the building, available to everyone entering the building and in effect creating a contagion firewall by screening for elevated temperatures prior to entry. It gives an instant, highly accurate, on-screen temperature reading for adults and children and alerts when there is a high temperature as this can be indicative of COVID-19 or other high mortality diseases such as pneumonia or sepsis.

This initiative at this children's nursery is complementary to Government guidelines and goes beyond ad-hoc occasional LFT COVID-19 testing as the data retrieved from FeverCheckerPro continuous checking system has a far wider role in personal health management.

Whilst the frequency of regular daily temperature measurements is significantly more likely to alert to illness at an earlier stage and therefore drastically reduce the potential of contagion, the simultaneous, integrated mask checks are a great facility to engender compliance and help to prevent contagion. The system is completely automatic, non-threatening, non-invasive, and

has a financial benefit by helping reduce costs associated with COVID-19 management as it works unattended so there are no staff overheads. In addition to live monitoring, all entry metrics are stored internally for traceability, management review, and analysis. This data provides an audit trail which affirms the nursery's compliance and fulfilment to its duty of care to all staff and visitors, assisting to indemnify it in the unfortunate event of any litigation.

Avoiding closure and regression  
This nursery is exceptional with its proactive approach to COVID-19 containment, giving it the ability to take far greater control of its COVID-19 risk reduction strategy.



**THE TIMES**

**Professor Jason Leitch, Scotland's national clinical director, said that vaccination remained the key protection against Covid-19, but added: "The figures are a reminder that no vaccine is fool-proof so other behaviours are still important."- The Times**

**"The frequency of temperature checks is vital in catching an illness, such as COVID-19. With typical incubation periods of 3-5 days, daily checks are essential for early detection, meaning that treatment can be more effective and potentially reduce the severity of an illness"**

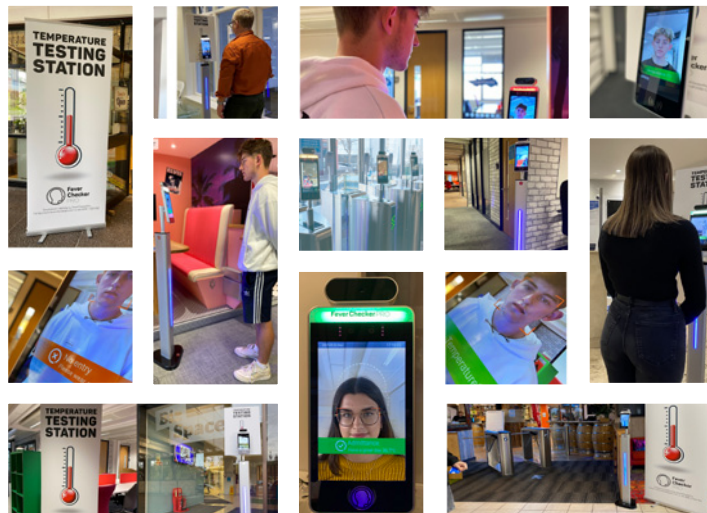
Consequently, it is far less likely that this nursery will suffer from closure and children's regression, enabling it to maintain the children's progression whilst indirectly helping to prevent contagion in the wider local community. This technology-led approach future-proofs the nursery for the potential further epidemics such as a potential high incidence of influenza in Winter 2021, which is currently being debated about in the media. If this does happen, Wyese Nursery will likely be amongst the first to identify this through their continuous, daily checks and be best placed to take measures to protect themselves as well as the children and families in the local community.



**Fever  
Checker**  
PRO

Be part of it...

# Kick Covid Out!



Help us to help you kick Covid out of every shop, pub, restaurant, hotel, school, university, medical centre, hospital, office and all other indoor establishments.

With fever detection on every door or entrance, symptomatic Covid can be managed more effectively, preventing it from entering inside, helping to kick Covid out. Be part of it.



This information has been prepared by FeverCheckerPro, a leading organisation in digital Covid management systems.

For further information please visit [www.FeverCheckerPro.com](http://www.FeverCheckerPro.com)



**Fever  
Checker**  
PRO